

RPM CHICAGOLAND

RPM Chicagoland

2017 RPM Conference in Lisle, IL

24th Annual "Naperville" Meet

October 26-28, 2017

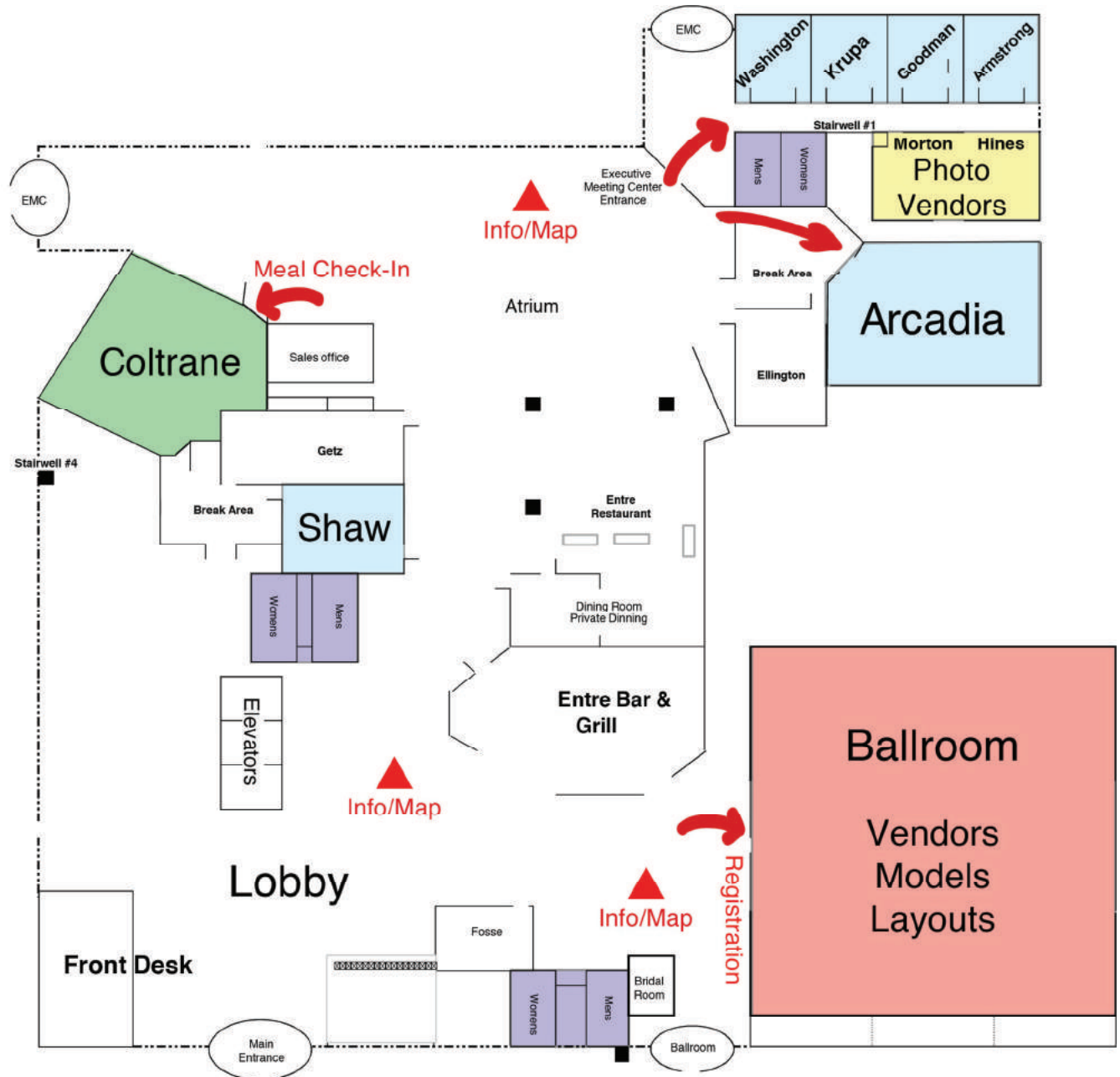
2017 Attendee Program

Sponsored By:



Special Thanks: Ted Cullota
Aaron Gjermundson
Frank Hodina
Jason Klierer

Hotel Map



Don't forget these other great RPM events!

"Prototype Rails 2018" Cocoa Beach, FL RPM, January 4-6, 2018. <http://www.prototype Rails 2018.com>

St. Louis RPM, Collinsville, IL, July 20-21, 2018. <http://icg.home.mindspring.com/rpm/stlrpm.htm>

And more on Eric Hansmann's calendar: <http://designbuildop.hansmanns.org/rpm-event-calendar/>

24th Annual RPM Conference

October 26-28, 2017

Thursday

WASHINGTON		KRUPA		GOODMAN		ARMSTRONG		ARCADIA		SHAW			
Seminar Room		Seminar Room		Seminar Room		Seminar Room		Tie ed Class oom		Seminar Room			
11:00 AM		COLTRANE ROOM											
11:30 AM		Kick Off Luncheon (Ticket Required) Illinois Central Steam in Transition Philip Weibler											
12:00 PM													
12:30 PM													
1:00 PM		20	70s and 80s Freight Kevin Kayser	15	UTLX X-3 Tank Cars Steve Hile	30	ATSF SanFran Boats John Barry	4	YVRR Roster Bldg Jeremy Dummmler	5	Manageable Layouts Eric Hansmann	24	Intro To Ops Al Kempf, Jr.
1:30 PM													
2:00 PM													
2:30 PM		16	Wine Tank Cars Tony Thompson	1	Hope Springs Bill Schaumburg	23	40' Boxcars of 60/70s Tim Vanmersbergen	32	Boat Race Trains Kristin Dummmler	17	B&O M-15k MiniKit George Toman	38	Loksound Matt Herman
3:00 PM													
3:30 PM													
4:00 PM		7	Product Design Pierre Oliver	14	Gen. Am. Reefer 2 Roger Hinman	33	Electric Locks Perry Sugerman	18	Resinatos Unite! Sankus/Welch		Set Up Banquet	25	TT&TO Live Sessions Krewer/Navigato
4:30 PM													
5:00 PM													
5:30 PM		COLTRANE ROOM											
6:00 PM		Banquet Dinner (Ticket Required) In Search of Obsolescence Bob Gallegos											
6:30 PM													
7:00 PM													
7:30 PM		13	TTX Autorack Pt. II Jim Panza	19	GN 40' Boxcars Jim Ruffing	10	Dr. Pennington Bill Welch	8	Pan Pastels Rob Manley		Banquet Cushion	Ballroom TT&TO Live Action (Layout Operating Sessions - Sign Up at Session 25)	
8:00 PM													
8:30 PM													
9:00 PM													

KEY:

Layouts		Tips and Techniques		Freight Car Research		Modeling		Extra Fare Meals
Passenger		Prototype RR Ops & Industries		DCC/Sound & Manufacturers		Layout Ops & TT&TO		Other

24th Annual RPM Conference

October 26-28, 2017

Friday

	WASHINGTON	KRUPA	GOODMAN	ARMSTRONG	ARCADIA	SHAW
9:00 AM	21 Monon 40' Boxcars Mont Switzer	12 CB&Q Coal Fleet Hamsmith/Rethwisch	6 Paper Structures Allen Ferguson	5 Manageable Layouts Eric Hansmann	9 Airbrushing 101 Alan Welch	37 Tsunami2 George Bogatiuk
9:30 AM						
10:00 AM						
10:30 AM	11 IC Boxcars Pt. II Brad Hanner	3 Alma Freight Cars Jared Harper	29 Steam Ferries Gene Semon	18 Resinators Unite! Sankus/Welch	27 Canadian Freight Charles Hostetler	24 Intro To Ops Al Kempf, Jr.
11:00 AM						
11:30 AM						
12:00 PM						
12:30 PM						
1:00 PM	20 70s and 80s Freight Kevin Kayser	16 Wine Tank Cars Tony Thompson	33 Electric Locks Perry Sugerman	34 WFE Hillyard, WA Tyrone Johnsen	36 HO Passenger John Greene	26 TT&TO Guests Lowell Smith
1:30 PM						
2:00 PM						
2:30 PM	35 Fans and Scouts Jim Singer	1 Hope Springs Bill Schaumburg	30 ATSF SanFran Boats John Barry	11 IC Boxcars Pt. II Brad Hanner	17 B&O M-15k MiniKit George Toman	39 Estate Planning James Dick
3:00 PM						
3:30 PM						
4:00 PM	28 Chicago Potatoes David Leider	14 Gen. Am. Reefer 2 Roger Hinman	22 Kitbashing Freight Ted Cullotta	2 Story City Clark Propst	25 Set Up FOTFC	25 TT&TO Live Sessions Krewer/Navigato
4:30 PM						
5:00 PM						
5:30 PM	Friends of the Freight Car Dinner (Ticket Required) COLTRANE ROOM					
6:00 PM	Railroad Research Panel Discussion Steve Hile (Moderator); Bob Ristow, Lake States Railway Historical Association; Hal Miller, Kalmbach/David P. Morgan Library;					
6:30 PM	Keith Kohlmann, C&NW Historical Society; Ted Culotta, Speedwitch Media; Teresa Militello, National Museum of Transportation Archives					
7:00 PM						
7:30 PM						
8:00 PM						
8:30 PM						
9:00 PM	Presentation Rooms Open Late for Impromptu Slide Shows Bring your computer, bring your slide projector: all four rooms will be available for attendees					

KEY:

Layouts	Tips and Techniques	Freight Car Research	Modeling	Extra Fare Meals
Passenger	Prototype RR Ops & Industries	DCC/Sound & Manufacturers	Layout Ops & TT&TO	Other

24th Annual RPM Conference

October 26-28, 2017

Saturday

	WASHINGTON	KRUPA	GOODMAN	ARMSTRONG	ARCADIA	SHAW
9:00 AM	21 Monon 40' Boxcars Mont Switzer	36 HO Passenger John Greene	29 Steam Ferries Gene Semon	34 WFE Hillyard, WA Tyrone Johnsen	40 Midwest Scenery Jason Klocke	31 Tractors on Trains Keith Kohlmann
9:30 AM						
10:00 AM						
10:30 AM	26 TT&TO Guests Lowell Smith	12 CB&Q Coal Fleet Hamsmith/Rethwisch	22 Kitbashing Freight Ted Cullota	2 Story City Clark Propst	9 Airbrushing 101 Alan Welch	37 Tsunami2 George Bogatiuk
11:00 AM						
11:30 AM						
12:00 PM						
12:30 PM						
1:00 PM	7 Product Design Pierre Oliver	3 Alma Freight Cars Jared Harper	23 40' Boxcars of 60/70s Tim Vanmersbergen	8 Pan Pastels Rob Manley	31 Tractors on Trains Keith Kohlmann	38 Loksound Matt Herman
1:30 PM						
2:00 PM						
2:30 PM	35 Fans and Scouts Jim Singer	15 UTLX X-3 Tank Cars Steve Hile	10 Dr. Pennington Bill Welch	4 YVRR Roster Bldg Jeremy Dummmler	27 Canadian Freight Charles Hostetler	39 Estate Planning James Dick
3:00 PM						
3:30 PM						
4:00 PM	28 Chicago Potatoes David Leider	19 GN 40' Boxcars Jim Ruffing	6 Paper Structures Allen Ferguson	32 Boat Race Trains Kristin Dummmler	11 IC Boxcars Pt. II Brad Hanner	Open
4:30 PM						
5:00 PM						
5:30 PM	Des Plaines Hobbies RPM After Party 1524 Lee Street Des Plaines, IL 60016 (Bring your badge for after-hours admittance)					
6:00 PM						
6:30 PM						
7:00 PM						

KEY:

Layouts	Tips and Techniques	Freight Car Research	Modeling	Extra Fare Meals
Passenger	Prototype RR Ops & Industries	DCC/Sound & Manufacturers	Layout Ops & TT&TO	Other

Welcome



Welcome to the 24th annual “Naperville” show.

Last year was the first year of rejuvenation as RPM Chicagoland. This year will build off that success and we hope to continue to provide a great “vibe” as you spend the next three days immersed in railroad prototype modeling.

We’re excited to offer a new Mini-Kit this year, this time a 1937 AAR design Chicago Great Western boxcar. These cars had unique “Carbuilders” corrugated round corner ends. The photo above planted the idea for these cars. I had just finished my version of last year’s M-15k and dropped it on the layout next to a sample model that Stan Rydarowicz had built. His CGW boxcar featured new resin ends from his line of resin parts. Unfortunately we lost Stan from the RPM family last year, and with it his line of parts. So we explored the idea of updating the resin ends utilizing the new rapid prototyping technology available.

Much thanks goes out to Jason Kliewer, Frank Hodina, Mark Runyan, Aaron Gjermundson, and Ted Cullota for their help in developing the resin parts and decals for this Mini-Kit. A big thank you also goes out to Ron Sebastian of Des Plaines Hobbies for donating car bodies for attendees requesting HO, N, and S scale kits. If you didn’t register in time to receive a Mini-Kit, Frank at Resin Car Works is considering adding the parts to his line, so find him at his table on Saturday to register your request!

For the full story on the kit development, as well as prototype information to aid your build, enjoy the pages on the 2017 Mini-Kit later in this program.

In the spirit of continual learning, we’ve asked George Toman to present on last year’s M-15k Mini-Kit. He built one of the best examples I’ve seen to date, and will be sharing the new information he found as well as some tips and tricks for details he needed to complete his model. The techniques are good for any model, and the specific M-15k content will be useful for those of you that attended last year, but haven’t completed your model yet. (Not pointing any fingers!)

And George's is just one clinic out of 40+ presentations. With ample support from the RPM family, we're scheduling six sessions in each timeslot this year. The breadth and depth of clinic material should mean there is something for every interest level.

One of the new events from last year was the live operating sessions on the Unitrack version of the Chicago, Peoria & Southern by Bill Navigato and Harold Krewer. Harold returns this year with a classroom session on Thursday and Friday afternoons, and then the live Time Table & Train Order operating session each of those evenings. Be sure to attend the classroom session so that you can sign up for the operating session, which will be held in the Ballroom. If you've ever wondered about TT&TO operations, this is your chance to learn in an uncluttered environment. We thank Kato USA, Iowa Scaled Engineering, and Fox Valley Models for sponsoring the temporary training layout.

Finally, don't forget the RPM After Party at Des Plaines Hobbies on Saturday night (information below). Your badge gets you in to an unforgettable night as the hobby shop stays open late with free food, drinks, and a special sale. For those of you without transportation, and those willing to drive, we will try to have a contact list at the registration table to match you up.

If you have any questions or comments throughout the event, please find me or one of the other "hosts" in a red name badge. Besides our team of Katie Skibbe (Registration), Matt Gaudynski (Vendors & Support), and Harz (Presentations & Hospitality), all of the members of HO Mod-U-Trak and N Modutrak layouts have host badges as well and would be happy to help point you in the right direction or answer questions.

If there are any complaints, you can save those for me. I apologize ahead of time for any glitches that occur. But hopefully anything that does go wrong won't ruin your overall enjoyment of the event.

All the best,



Mike Skibbe

RPM CHICAGOLAND	DES PLAINES HOBBIES	
THE RPM AFTER PARTY		
Saturday, October 28 5:00-8:00 PM 25 Minutes from Lisle	Food Drink \$\$ Specials \$\$	1524 Lee Street Des Plaines, IL 60018
Wear your RPM name badge for admittance!		

2017 RPM Chicagoland Mini-Kit

Chicago Great Western 92000-92149 BLT 9/1945



Pullman Standard Builders Photo

The Mini-Kit concept goes back to the Sunshine Models days, when the event was hosted by Martin Lofton. Martin used to entice early registrations to the event by offering a limited run Mini-Kit as a gift. Some years it was simply a set of custom decals, some years it was a few smaller resin parts, like a set of doors or boxcar ends. The idea was that the Mini-Kit could be used to dress up a readily available plastic freight car as a new prototype model. A list of past kits is on the web at www.sunshinekits.com

Following 2016's successful B&O M-15k wagontop Mini-Kit, we knew we had to come up with another kit for the 2017 event. After completing my HO sample model, I had the M-15k parked next to a Stan Rydarowicz sample model of a CGW 1937 AAR 10'0" car that he built to showcase his resin conversion ends. These cars had proprietary Pullman-Standard "Carbuilder" corrugated round corner ends which consisted of a 4-5 arrangement of thick corrugations with sharp points at each end.

We lost Stan from the RPM family a few year's ago, and also his line of resin conversion parts. Given the unavailability of these Carbuilders ends, and with today's rapid prototype



Original Stan Rydarowicz Resin Ends

technology available to create clean masters for casting, this year's Mini-Kit idea was born. We'd concentrate on creating a new master for these stamped steel ends, and offer them in resin with a set of decals to convert a standard 1937 AAR boxcar into a CGW 92000-92149, 1945 built boxcar.

It turns out these ends were used on three series of 1937 AAR boxcars per Ed Hawkins. (You can reference his list of as-built 1937 AAR Box Cars on the Steam Era Freight Cars website at: <http://steamerafreightcars.com/prototype/frtcars/1937aarmain.html>)

C&EI 1-5, Blt 9-1945, P-S Lot 5808

CGW 91000-91099, Blt 9-1944, P-S Lot 5771

CGW 92000-92149, Blt 9-1945, P-S Lot 5805

The Chicago and Eastern Illinois's 5 cars were built for express service and delivered in bright orange with blue and black lettering advertising the road's named passenger trains. Like the CGW cars, they also had 7 panel Superior doors.

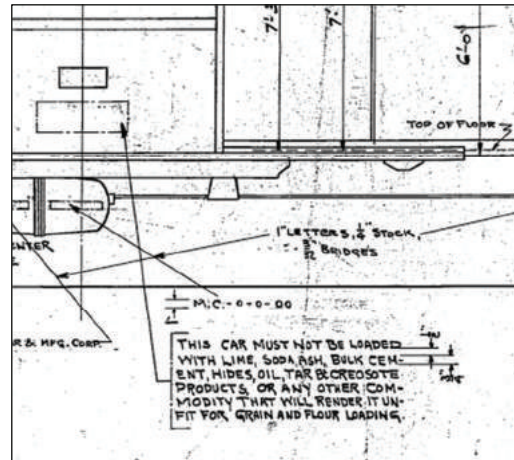


CGW 92065 in simplified lettering. Rochester, MN, October 1, 1965. Sid Wheeler Photo, Collection of Clark Propst

Chicago Great Western initially ordered 100 cars that were built in September of 1944. They followed with an order for 150 more cars built the following year in September of 1945. Both series of cars had 7 panel Superior doors, Murphy raised panel roofs, Equipco Hand Brakes, Wood running boards, and steel plate brake steps. Trucks were double truss 50 ton trucks, plankless springs, and a center leaf spring in the coil spring pack as seen in the builder's photo. Both side and end ladders had seven rungs.

The CGW cars were delivered in boxcar red with white lettering, featuring the road's Corn Belt Route herald on the right side, and Chicago Great Western spelled out above the reporting marks at the top of the car on the right. Later, the herald was dropped, and finally, simplified lettering was applied. Aside from the standard CGW lettering practice, the cars also featured 3/4" text on each door that spelled out the inappropriate loadings for the cars that would render them unfit for grain and flour loading. While we haven't found the lettering diagram for these 1937 AAR cars, earlier series had a note as follows:

THIS CAR MUST NOT BE LOADED WITH LIME, SODA ASH, BULK CEMENT, HIDES, OIL, TAR, & CREOSOTE PRODUCTS, OR ANY OTHER COM-MODITY THAT WILL RENDER IT UN-FIT FOR GRAIN AND FLOUR LOADING.



Segment of P-S Drawing 513-D-64

The main component needed for the kit is the Carbuilders end. And for assistance with designing this part digitally as a solid model, we turned to CGW modeler and N scaler Jason Kliewer for assistance. But first we needed some prototype data on which to base the newly designed parts.

Ed Hawkins came through first with information from the bill of materials for these cars. From Lot 2808, indicated within the specialty items were "Steel Ends – Carbuilder – Corrugated Round Corner". The drawings specified were stamping drawing 519-D-77, Steel End (both top and bottom sections). Later review of the bills of materials for CGW lots 5771 and 5805 listed an End Arrangement drawing 503-E-62 which, for whatever reason, wasn't specified in the C&EI document.

Frank Hodina was able to locate a copy of Pullman Standard drawing 503-E-62, "End Arrangement" for lots 5771 and "3805" [sic] from the Michigan City, Ind. Facility. While this wasn't the stamping drawing, which hasn't been located yet, it had enough measurements to allow the solid model to be created by Jason.

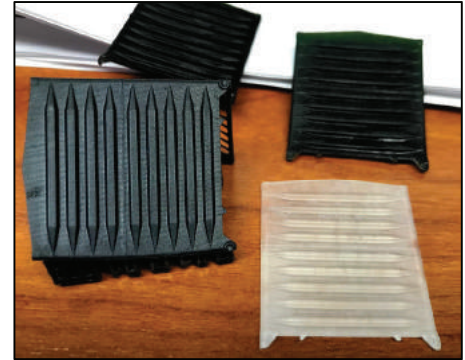
Jason drafted the digital model in Solidworks. The solid model is displayed at the left, showing every rivet and fillet. The next step was to move from the digital file to a physical master. For this, we went the route of rapid-prototyping. There are many options here, from the most expensive Perfactory prints (www.best-cast.com) to job shops like Shapeways, to home models like the FormLabs series of printers. We tried several methods to see what print would be the cleanest in order to



Jason Kliewer screen shot of digital model

serve as a master for resin castings.

The N scale ends came out best with a FormLabs 1+ machine, with the print coming courtesy of our friend Mark Runyan. He also attempted prints of the larger ends, and while the ribs came out well, the back of the parts was not flat enough for casting. We next went to Shapeways to try their FUD and FXD material. This is an off white and transparent material that holds good detail right down to the HO rivets. The HO and S ends ended up being FXD, while the larger print volume needed for the O scale end required FUD. Hopefully this information will help if you develop your own parts.



Shown are three test versions of the HO scale ends, Perfactory top two, Shapeways black acrylate left, FXD white right.

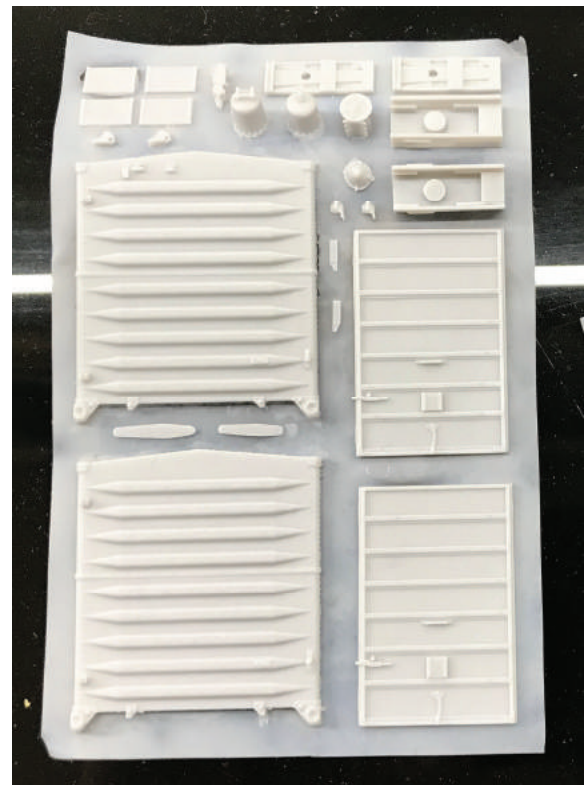
The rapid prototype prints then made their way to master pattern maker Frank Hodina for final evaluation and touch-up. He added some additional brackets to the HO ends, along with a new coupler box (near scale, fits a Kadee #58 semi-scale whisker coupler) doors, and brake components. The N scale ends were pasted down with a set of 7-panel Superior doors and placards. The S ends and O scale ends were pasted down for casting as well.

All these patterns then made their way to Aaron Gjermundson for casting in resin. He pulled silicone molds off the master parts and began casting in resin. The total run for this year's kit is 200 HO scale, 50 N scale, 12 S scale, and 12 O scale.

While these parts were being cast, we hunted down the information needed to do accurate lettering. Ron Sebastian shared his artwork for an earlier series of cars, and Jason Kliewer modified that artwork to work for the 1945 built cars. The draft artwork then went over to Ted Cullota for his masterful revisions. Ted sent the artwork to Cartograf in Italy for screen printing on decal paper.

The Mini-Kit of new resin conversion ends and decals for these Chicago Great Western Boxcars was now complete. When Ron Sebastian of Des Plaines Hobbies learned of the project, he made the very generous offer to supply 1937 AAR boxcar bodies for the N, HO, and S cars. So attendees requesting those kits will, like last year, receive a full boxcar body to aide in the conversion! Our thanks goes out to Ron for his generosity, so please give him a hearty thank you at the Des Plaines Hobbies after party on Saturday night!

Construction of the model will be relatively straight forward. For the HO, S, and O scale conversions, the first step will be to remove the old car ends molded



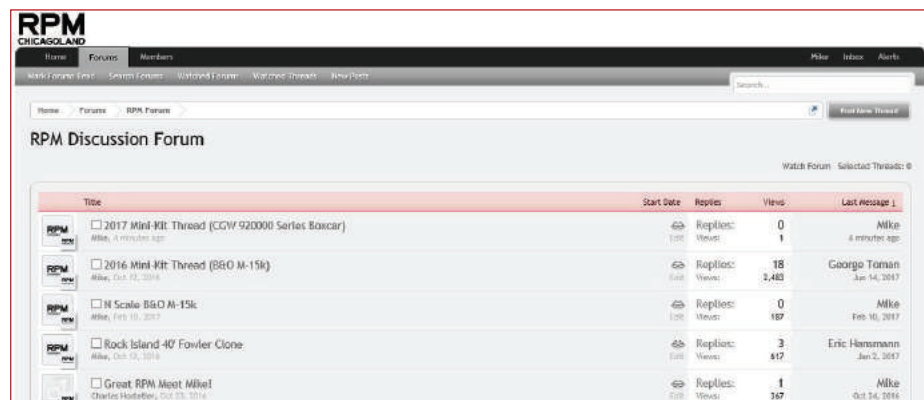
First HO scale castings from Aaron Gjermundson, from Frank Hodina's masters.

into the body. Make your cut at the corner post seam on the sides, removing the rivet strip, and file the surface flush and true. The resin ends can then be glued in place using your favorite super glue or CA. Follow the underbody drawing for laying out the brake appliances, making sure to remember that the Pullman Standard drawing is looking down on the underframe as if you were inside the car and the floor was made of glass.

While we are not including step-by-step directions here, many of us will be sharing build photos and more information on the RPM Conference website's forum at www.rpmconference.com/forum. If this is your first time using resin parts, or you want to know more about how to pipe the underbody of the car, please join in the conversation. Until we see you there, happy cutting!



Stan Rydarowicz model of CGW 91036, Collection of Mike Skibbe



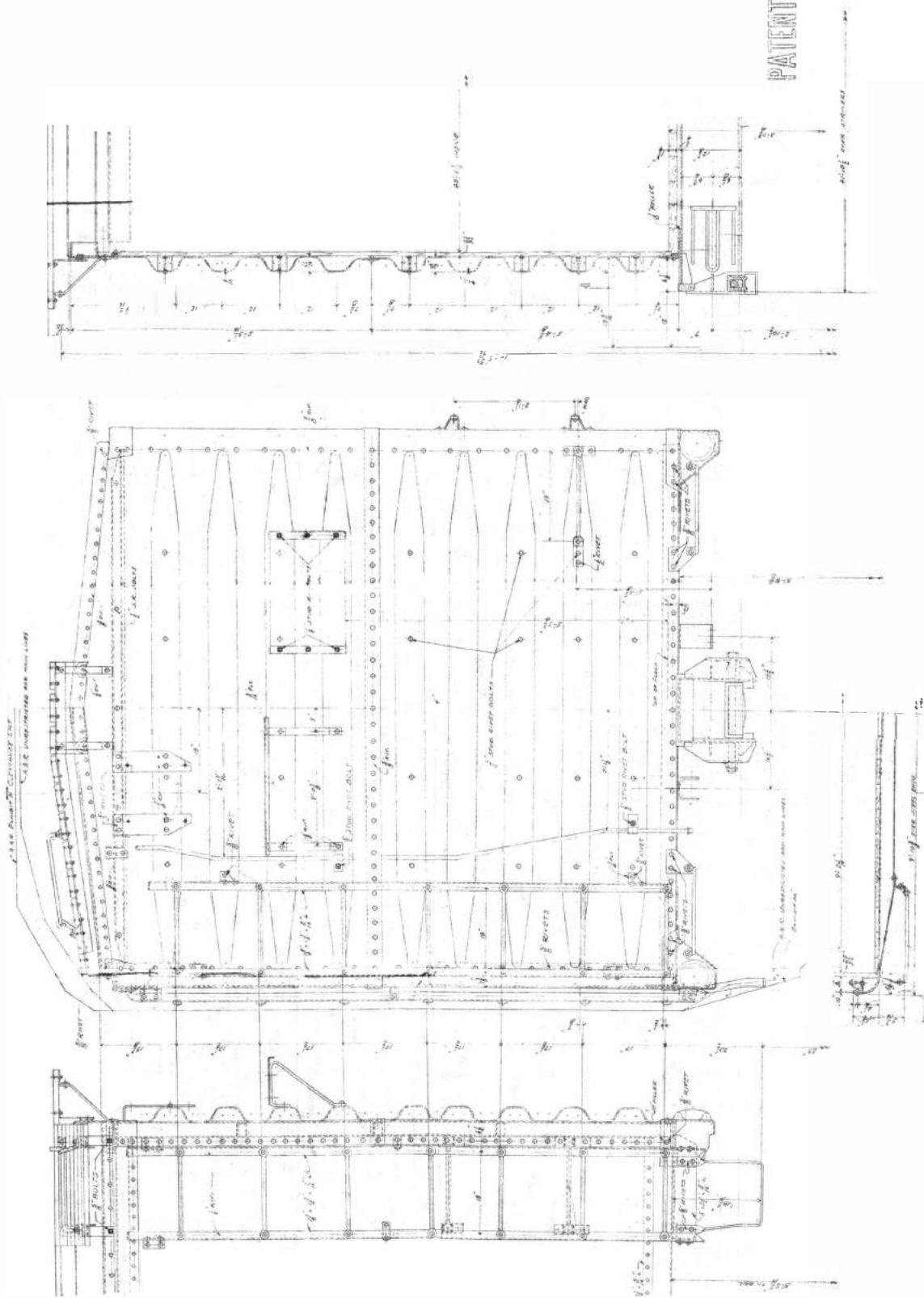
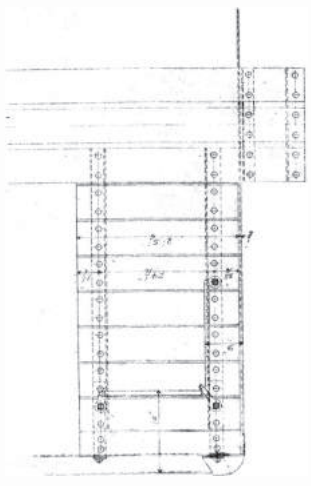
Join us on the RPM Forum to share your build:
www.rpmconference.com/forum

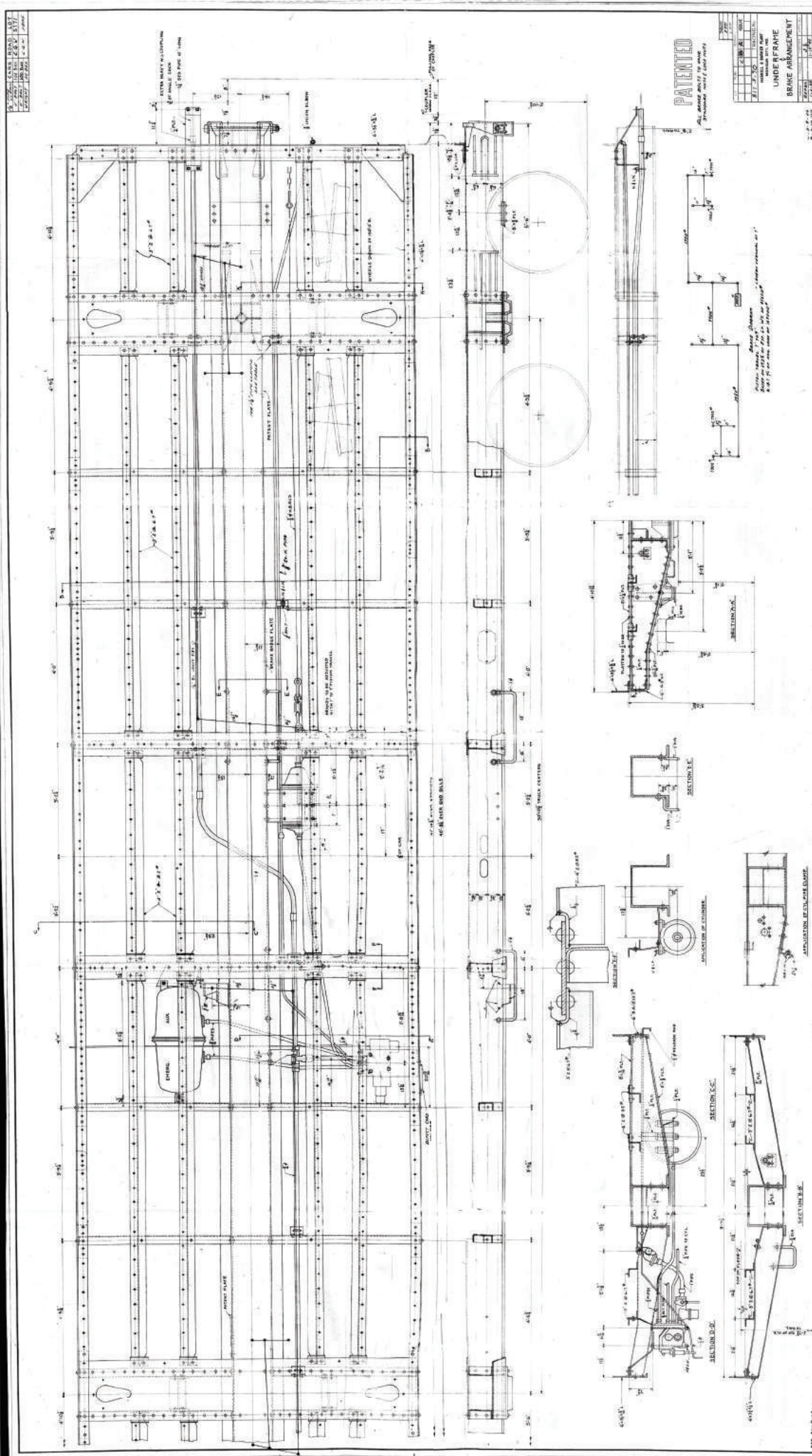
DATE	1903
BY	C. G. W.
NO.	5555

DATE	1903
BY	C. G. W.
NO.	5555

PATENTED

REVISED UNLESS OTHERWISE NOTED





Seminar Descriptions

Layouts

1- Discovering Hope Springs: A New Way To Plan A Layout

Bill Schaumburg

Wine and chocolate. And maybe some talk about trains! Past Railroad Model Craftsman editor Bill Schaumburg is back to share his planning adventures for a new layout.

2- The Story City Branch Part II: Rolling Through Roland

Clark Propst

Clark will explain why Roland, Iowa is so appealing and how he proportioned the rail served customers into a believable scene in the space he had available. He'll also show how he adapted backdrop photos to stretch the modeled area and truncated structures along the fascia.

3- Building a Freight Car Roster for Santa Fe's Alma, KS Branch Circa May 1943

Jared Harper

Jared returns to discuss how he assembled a freight car roster for a specific Santa Fe branch line.

4- Developing a Fleet: Prototype based freight car fleet for the Yosemite Valley Railroad

Jeremy Dummler

Using a variety of resources, Jeremy will discuss how he set about determining the number, type, and specific prototypes he's chosen to fill his freight car roster as he works toward building his version of the Yosemite Valley Railroad. The discussion will include how he created target numbers for each kind of freight car, and what models commercially available or scratch built are necessary to fill that roster to a minimum number in order to make the railroad operate properly.

5- Prototype Modeling and Manageable Sized Layouts

Eric Hansmann

As many modelers downsize and move to smaller homes, we need to narrow our focus to build a manageable and enjoyable model railroad for a new space. Several prototype locations will be reviewed as well as research suggestions and layout examples.

Tips and Techniques

6- A Journey in Detailed Paper Structure Models

Allen Ferguson

Allen has gone on a journey of building detailed paper models. He will review the techniques, where to obtain source materials, and what has worked well for him in developing structures for his layout.

7- Product Design in Resin and Etched Metal

Pierre Oliver

Pierre is the proprietor of Yarmouth Model Works and an accomplished custom builder. He will discuss the up and downs, successes and failures, of working with some of the more modern manufacturing processes we now have available to us.

8- Pan Pastels: New Tips and Tricks

Rob Manley

Everyone's favorite PanPastel rep and longtime HO Mod-U-Trak member Rob Manley presents an update to the PanPastel techniques that have been developed over the past few years. These are new and familiar techniques "guaranteed to amaze and amuse your friends!"

9- Airbrushing 101

Alan Welch

Alan is a frequent guest on Trainmaster TV's Notch 8 segment and will be presenting his highly informative clinic that teaches the basic airbrushing and airbrush weathering techniques. He will cover air sources, compatible materials, different paints and their use, surface preparation and more. Attendees will also learn about different types of airbrushes, techniques, maintenance, control exercises, and more. Learn to airbrush your scenery, backdrops, locomotives and rolling stock, track and structures!

Freight Car Research

10- Dr. Mary E. Pennington, PhD & the "Modern" Refrigerator Car

Bill Welch

America's refrigerator car fleet was already struggling to deliver perishable commodities in good condition and the country's entry into the World War in 1917 only exacerbated this problem. The USRA asked for help and the USDA's Chief Food Scientist Dr. Mary Engle Pennington was enlisted to sort out what the problems were. Her findings and resulting design recommendations would inform the rebuilding and new construction of ice bunker refrigerator cars until the end of the "age of ice." However the importance of Dr. Pennington's story neither started nor ended with this work.

11- Transition Era IC Boxcar Fleet Part II

Brad Hanner

This seminar will examine the special-purpose boxcar fleet of the Illinois Central in the ten years following WWII. Similar to Part I, first presented at Chicagoland 2016, we'll examine the ebbs and flows of the fleet with an emphasis on identifying the larger series of cars. Advice on proportional representation in your fleet and suggestions for modeling "signature" cars will round out the presentation.

12- CB&Q Coal Fleet from 1925 to 1960

Jerry Hamsmith & Ed Rethwisch

A study of the car types included in the Burlington's coal hauling fleet. An overview of the evolution of the entire fleet and a detailed look at each of the car types included.

13- Trailer Train Autorack Story Part II

Jim Panza

Jim Panza returns to discuss the rest of the early enclosed autorack fleet with information from the archives of TTX.

14- General American Refrigerator Cars: The Second Hand Cars

Roger Hinman

Following up on last year's presentation on General American built refrigerator cars, this year's presentation will look at all the cars purchased through fleet acquisitions or special purchase. Supporting data will be provided to show that the cars from the former Swift Refrigerator Line and Union Refrigerator Transit gave GA the heft and flexibility it needed to become a major lessor of cars.

15- A Geek's Guide to UTLX X-3 Tank Cars

Steve Hile

Steve will walk us through the evolution of UTLX's ubiquitous X-3 tank car design with detail images and spotting features. X-3 cars were built over a span of more than 20 years, beginning 100 years ago and encompassed capacities between 2300 and 12000 gallons in both single and multiple compartments. Some model examples will also be shown.

16- Wine Tank Cars

Tony Thompson

This clinic represents completion of a joint project of Richard Hendrickson and Tony Thompson. It concentrates on prototype wine tank cars, drawing on more than 100 photos of these cars from Richard's and Tony's collection, and also includes description of the wine business that used these cars; operating patterns of the cars; and some comments on ways to model these cars.

Modeling

17- Bringing the 2016 Mini-Kit to the Next Level: B&O M-15k Wagontop Rebuilds

George Toman

Last years 2016 Mini-Kit was a great start to a unique model but George wanted to make improvements to it. What is included in this clinic is info to model the unique brake arrangement and underframe, as well as modifying the supplied parts to make an accurate model. Besides a step by step how to, George include some tips and techniques on making the brass steps and other unique details

18- Resinators Unite! (Building and detailing resin freight cars)

Jeff Sankus and Bill Welch

Bill Welch and Jeff Sankus will discuss modeling freight cars that use resin as a medium.

Tools, techniques and details will be discussed. Bill and Jeff will also, talk about the Chicagoland RPM 2017 mini-kit: Chicago & Great Western 40' boxcar

Having an issue? Maybe you will find the answer during our discussion. Bring your models to share finished or not!

19- Great Northern 40' Boxcars – All that color! (Late 1960's)

Jim Ruffing

Jim will help answer questions such as:

What color scheme and letter style was a GN number series delivered in?

What color schemes and letter styles appeared on a given number series over time?

What color schemes and letter styles are appropriate for a given era?

When and on what car series was your favorite scheme applied?

What models are accurate in these regards?

20- Modeling Freight Cars in the 70s and 80s

Kevin Kayser

FIRST TIME SLOT AFTER THURSDAY LUNCH MAY HAVE SAT CONFLICT

Disco music, bell bottoms, and Pac Man. While these cultural icons defined the 70s and 80s, railroad freight cars during this time period had their own distinctive characteristics. Kevin will cover ACI labels, COTS stencils, and Per Diem boxcars. He will also show examples of models that are updated and backdated to fit the time period.

21- Forty Foot Boxcars of the Monon Railroad

Mont Switzer

Indiana's own Monon Railroad rostered a mere 1395 forty foot boxcars of 3 distinct designs: AAR 1937, pre-PS- 1 and PS-1, all from a single manufacturer. Delivered between 1941 and 1957, each new series had its own distinct "as built" paint and lettering scheme. Over time each series of cars received modifications, upgrades, and the railroad's "signature" or "standard" paint and lettering. Two series were rebuilt prior to the Monon/L&N merger in 1971 which ended it all. Come see which HO scale Monon model best represents your modeling location and era.

22- Finding Kitbashing Opportunities in Freight Cars

Ted Cullota

This is a continuation of a clinic presented in earlier this year with updates to in-progress projects. This clinic focuses on highlighting how to find opportunities for freight car kitbashing subjects and how to replicate models of those prototypes. There will be in-progress models available for inspection in addition to the presentation. By recognizing subtle differences in prototypes, one can modify commercially available kits and models to accurately replicate unusual or unique prototypes that are distinct from the run-of-the-mill cars seen on most layouts.

23- Sequel to 40' Boxcars of the 60s and 70s

Tim VanMersbergen

Tim will dive deep into the forty foot boxcars that, following rebuilds, served throughout the 60s and 70s including new looks at L&N Rebuilds with gussets and Pullman doors, SAL Magors, PRR/PC X43Cs, GN waffleside rebuilds, GN rib side rebuilds, GM&O appliance boxcars, ATSF rebuilds with Transco sides, UP rebuilds of mid-60s, and continue on to building models.

Time Table & Train Order and Prototype Operations

24- Introduction to Operations

Al Kempf, Jr.

Interested in starting operations on your layout? Or interested in operating on another layout but need some background? Al will introduce you to operations in a 100 level course designed to familiarize you in the various operating schemes.

25- TT&TO Training Sessions and Live Operating Sessions

Harold Krewer & Bill Navigato

The Chicago Peoria & Southern will again be reincarnated as a Unitrack table top layout! Bill and Harold return with their popular TT&TO live operating sessions this year in the main ballroom. Come practice TT&TO, learn from the masters, and have fun developing your skills without worrying about messing up at an intense session.

26- TT&TO Operations Made Simple for Guests

Lowell Smith

This workshop will give you proven tips to create a Time Table & Train Order operating session that will not intimidate your guests, and make them want to come back for more.

Lowell Smith from Portland, Oregon will show how he runs TT&TO op sessions that are fun and 'welcoming' to first timers. Build a faithful operations crew that will keep them talking about the fun times and create great memories!

Prototype Railroad Operations

27- Modeling Canadian Freight in a U.S. Setting: Data and Implementation

Charles Hostetler

Charles is modeling the Milwaukee Harbor area in September /October of 1957. This setting emphasizes the rail/maritime interface, and the operation scheme is centered on the layout as a setting for modeling freight commodity flows. This presentation explores the data sources and methodologies for prototype-based modeling of Canadian freight traffic in the context of a specific layout setting.

28- Chicago's Potato Market (Largest in the World): C&NW's Wood Street Yard

David Leider

This clinic on the Wood Street potato yard traces the journey of a potato from farmers field to the local storage warehouse, then via freight car to the Wood Street yard and eventually to the retail consumer. Dave will show how Chicago became the great distributing center, how potatoes are shipped and marketed and where they are grown and used.

29- Steam Transfer Ferries of the Mississippi River from St. Louis to New Orleans

Gene Semon

A brief look at the railroad transfer operations across the Mississippi on 13 railroads. We'll look at these steam powered boats operated by the Wiggins Ferry Company, Madison County Ferry Company, Missouri Pacific, Mississippi River & Bonne Terre, Illinois Southern, Iron, Mountain & Southern, Yazoo &

Mississippi, Illinois Central, Frisco, NOT&M, Southern Pacific, Texas & Pacific and Morgan's, Louisiana & Texas Railroad.

30- Santa Fe's San Francisco Fleet: Nine Decades of Rail-Marine Traffic on San Francisco Bay

John Barry

Santa Fe broke the Southern Pacific blockade of San Francisco in 1900, making its entrance to the City by the Bay via wooden carfloats, tugs and passenger ferries. Over the years, the fleet was expanded, improved, modernized and then sold off. We will examine the vessels that broke the Octopus's strangle hold on The City and the remnants of the infrastructure that remain today. Researching this clinic he found a distaff pair that exhibited a taste for tugs. Bonus points for those who can answer "Where's Jane?"

John models Santa Fe's Third District of the Valley Division and the Alameda Belt circa December 1944. The location and era come from his multi-modal interest in transportation and military history.

31- Tractors & Trains: Moving J.I. Case Equipment By Rail

Keith Kohlmann

A look at the movement of tractors by rail, with a focus on material from J.I. Case, a Racine Wisconsin based manufacturing firm that was among the 10 largest builders of farm tractors as the company transitioned to construction equipment in the 1950s.

32- The Boat Race Trains, New London, CT pre-1941

Kristin Dummier

Did you know the idea for intercollegiate athletic events was born on a train? Ever consider sitting in rows of bleachers on flat cars covered with a canopy to watch a sporting event? The Central Vermont Ry and the NY,NH&H Ry did it for one special event for over 60 years! Learn about the unique boat race train observation cars that both the Central Vermont and New Haven ran along the Thames River in New London, Connecticut to chase Harvard and Yale boat racers at their annual Regatta. History, research and prototype project planning will all be discussed.

33- Electrically Locked Switches: CB&Q Era GRS Equipment and Layout Implementation

Perry Sugerman

The Rochelle to Oregon portion of the CB&Q C&I that Perry is modeling has upwards of 30 electrically locked switches. Modeling their method of operation is key to the model. Working models of the prototype switch locks is not feasible. Perry will describe an "in facia" operating electric lock.

34- The Western Fruit Express and Associated Facilities at Hillyard, WA

Tyrone Johnsen

The Great Northern Railway had a major yard and shop facilities in the Spokane, WA where the mainline between St. Paul in the east and Seattle had a primary junction to Portland and California. The GN owned Western Fruit Express built one of its two car shops at Hillyard which maintained the pool of FGE, WFE, and BRE cars; and the yard area originally was home to seven large ice storage houses and then an ice manufacturing plant. Through the use of the old GN maps and photos we will look at and discuss these facilities and how they were utilized to support the shipment of perishables in this area.

Passenger

35- Fans and Scouts 1960 (CB&Q Passenger Department Files)

Jim Singer

More passenger oddities, this time from the CB&Q Passenger Department Files. Jim will review a multitude of fantrip and boy scout movements from the 1960s.

36- Building HO Passenger Cars with 3D, Injection Molded, Resin, and White Metal Parts

John Greene

John Greene of Bethlehem Car Works will discuss ideas on building heavy-weight passenger cars, parlor cars and Pullman sleepers using 3D printed car sides and parts, modified car sides and available detail parts.

DCC & Sound

37- Tsunami2 by Soundtraxx: Not Your Father's Tsunami!

George Bogatiuk

George from Soundtraxx will be presenting on the new Tsunami2 DCC sound decoders. Each of the two presentation times will cover different material, so feel free to attend both sessions for extra information.

38- LokSound DCC/Sound Products and New Full Throttle Features

Matt Herman of ESU

Learn all about DCC and Sound from Matt Herman of ESU/LokSound. Matt will be talking about the state of the art in sound decoders, how to get the most from your sound equipped models, and also demonstrate the features of the new Full Throttle sound from LokSound.

Other

39- Estate Planning: Make a gift to yourself, to your heirs, preserving your collection

James Dick & Tony Thompson

Where will your railroad collection go after you are gone? What does your family know or understand about your fascination with trains? Most of us "collect" with little thought of the efforts and years that have gone into the preservation of our collections. We should give some thought to seeing that our collections are preserved as nobody gets out of this life alive. This presentation is set up in a way as to help you make that preservation as painless as possible.

40- Modeling The Corn Belt Route Scenery

Jason Klocke

With a last minute manufacturer cancellation, and with Jason finding himself free from railroad duties and able to attend, we're pleased to announce that Jason will be giving his outstanding scenery presentation on Saturday. This clinic is only available once. Come learn how Jason models Midwestern scenery using the state of the art materials, and an attention to everyday details.

Local Hobby Shops

Please support our local hobby shops during your visit to the area:

Des Plaines Hobbies

1524 Lee Street
Des Plaines, IL 60018
www.desplaineshobbies.com
(847) 297-2118
25 miles, 30 minutes away

Lombard Hobbies

524 St. Charles Place
Lombard, IL 60148
www.lombardhobby.com
(630) 620-1084
15 miles, 20 minutes away

Timberline Train Shop, Ltd.

5228 Main St.
Downers Grove, IL 60515
www.timberlinetrainshop.com
(630) 324-6136
8 miles, 15 minutes away

RPM Conference Website

Have you checked out all that the RPM Chicagoland website has to offer? Here's some highlights that go beyond simply registering for the event:

Forum

www.rpmconference.com/forum

We welcome you to sign up and participate on the RPM forum. See other modeler's progress on Mini-Kits, including last year's B&O M-15k, share your latest modeling, and ask prototype related questions. This is like a mailing list, but without filling up your inbox each day. And photos can be posted right in with the text.

RPM Blog Roll

<http://www.rpmconference.com/index.php/rpm-blog-roll/>

Many excellent RPM modelers share their own work through online "blogs". Short of having individual links to their websites and visiting daily, we found it hard to keep up with new posts. In order to gather these blogs into one spot, we've programmed the RPM Blog Roll to pull new posts into one quick page. Visit here first to see what is new in the online world of RPM.

Past Event Photos

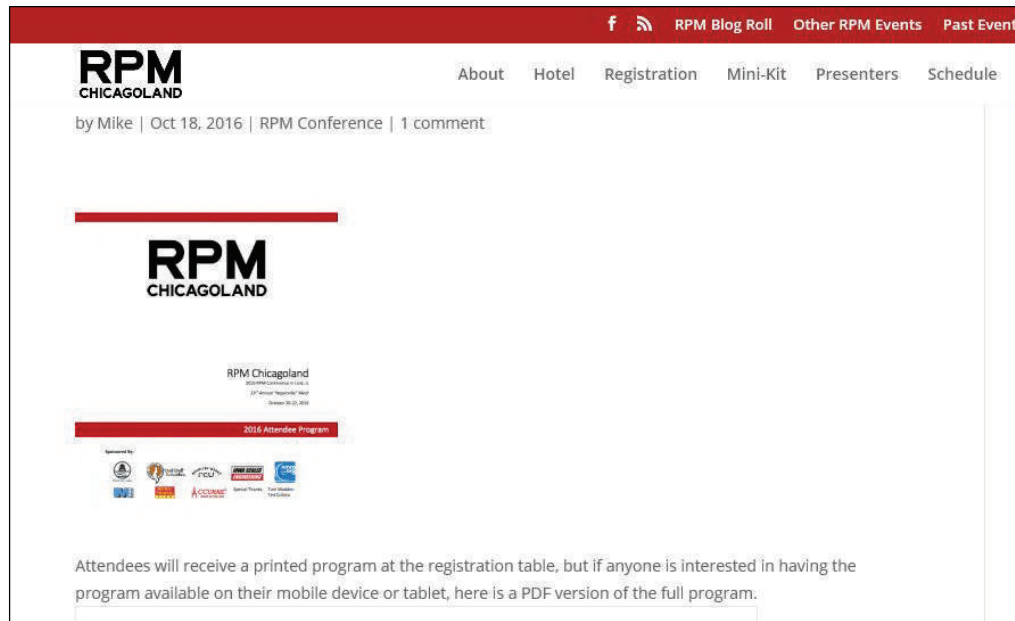
<http://www.rpmconference.com/index.php/past-photos/>

Everyone loves perusing photos of the event, whether you were able to attend or not. We maintain links to past event photos so that you can revisit the excellent modeling on display, at your leisure.

Digital Attendee Programs and Handouts

<http://www.rpmconference.com/index.php/2017-rpm-program-complete/>

This program, as well as past year's programs, will be maintained online. We also try to keep those presentation handouts which are available in a digital format for future reference.



A digital copy of this program is available as a PDF for attendees who would like to pull it up on their digital device. Please visit the www.rpmconference.com website at the following link:

<http://www.rpmconference.com/index.php/2017-rpm-program-complete/>

RPM CHICAGOLAND

RPM Baby!