

Tailoring your Freight Car fleet for Operations

Al Kempf, Jr.



Exits Restrooms

Tailoring your Freight Car fleet for Operations

Al Kempf, Jr.

Anything that I say is simply my opinion. Others may view things differently, there are many ways to accomplish the same goal. (but then they are wrong) . Any Questions or comments please just raise your hand. Please bear with me if I say we will get to that. Remember that this is a hobby, do what pleases you. If you do not like it, don't do it. Rivet Counters.



Disclaimer

We will be discussing Freight Car fleets.

Passenger operations are unique unto their own

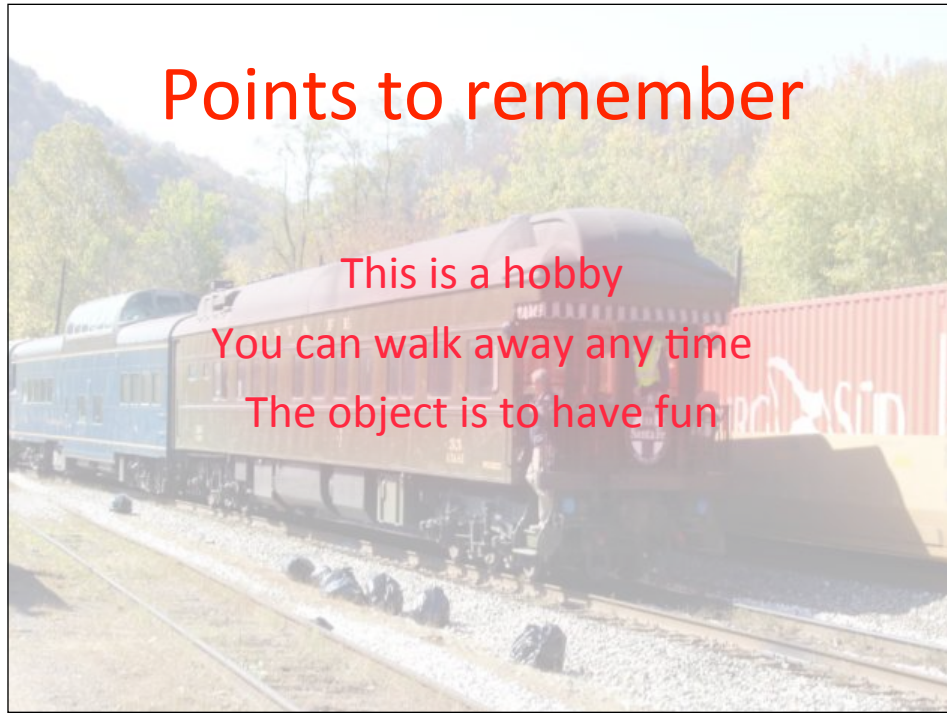
Passenger operations involve cleaning the passenger cars, clean linens for overnight beds, stocking the kitchen, picking up express cars and mail, picking up baggage cars. And after the trip ends getting everything ready for the next trip. Rail carts are like the ships I used to sail on, ships do not earn money in port, railcars earn money by moving.

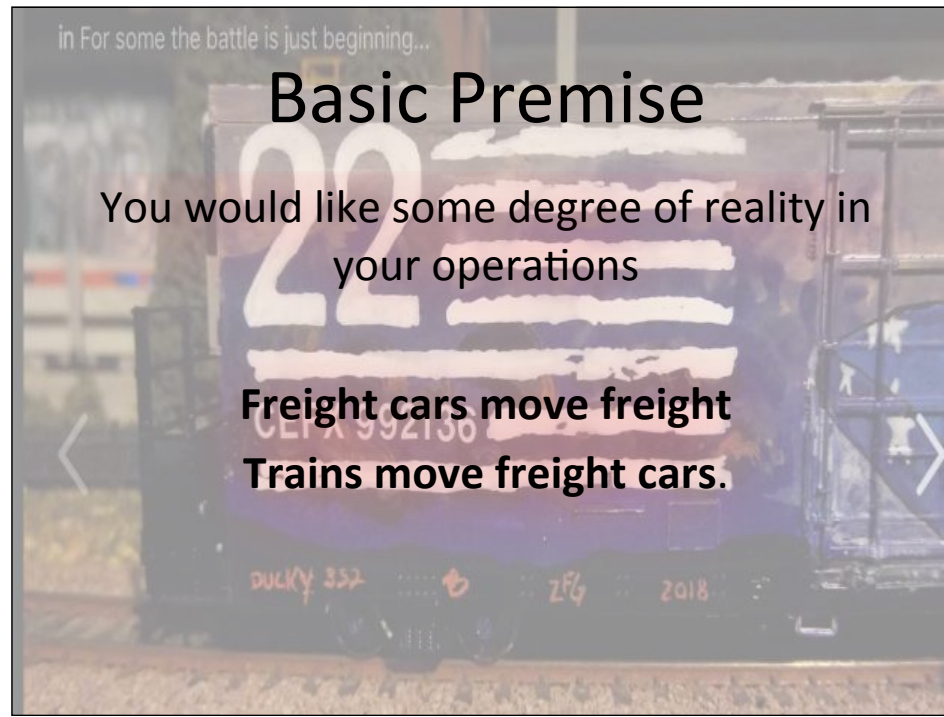
Points to remember

This is a hobby

You can walk away any time

The object is to have fun





The minute you begin operations Your locals handle individual cars Everything else handles blocks of cars. I have had fun trying to get yardmasters at WCMRRA to understand that they block cars for their locals, and their locals only. Anything for the other yards gets lumped into a bloc named " Other Yard "

Why tailor your fleet ?

- Run Cars you like



Why tailor your fleet ?

- Run Cars you like
Showcase Special cars



Someday I am going to build a model of this car, when I can get enough information to do it justice. Why would anyone want a “baby” tank car ?

Why tailor your fleet ?

- Run Cars you like
- Showcase Special cars
- Service your industries



Story about wood pellets.



Why tailor your fleet ?

- Run Cars you like
- Serve your industries

What would you think that this is ?

Why tailor your fleet ?



Run Cars you like

Serve your industries

Special features



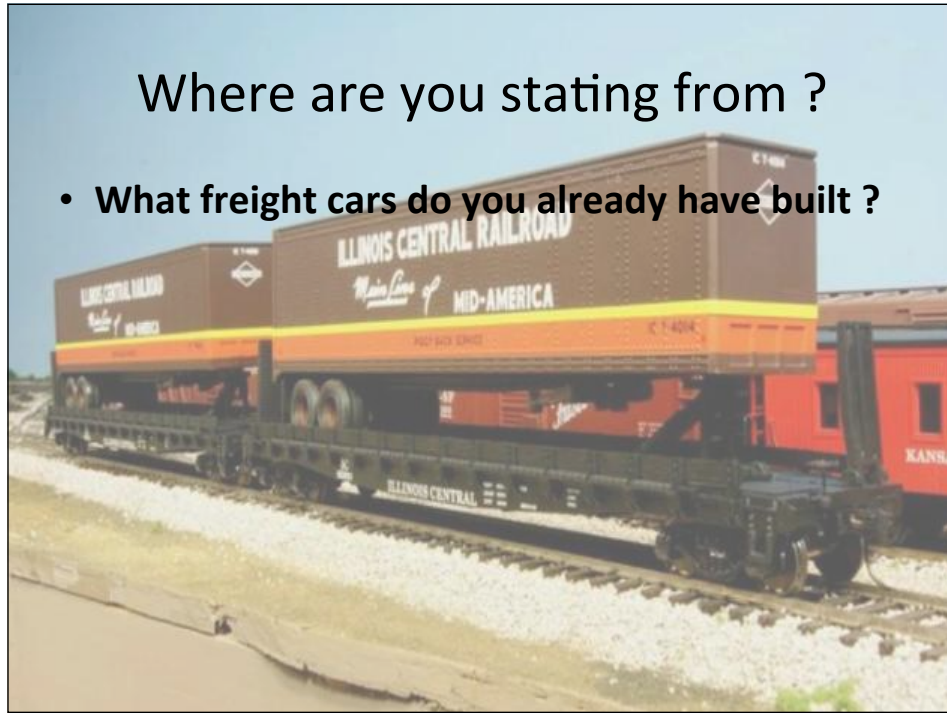
The Will County Model Rail Road Association has two locations with heavy lift capabilities, and they have nothing to do with each other.



Note that they painted out the reporting marks. I doubt that this is going to the repair shop.

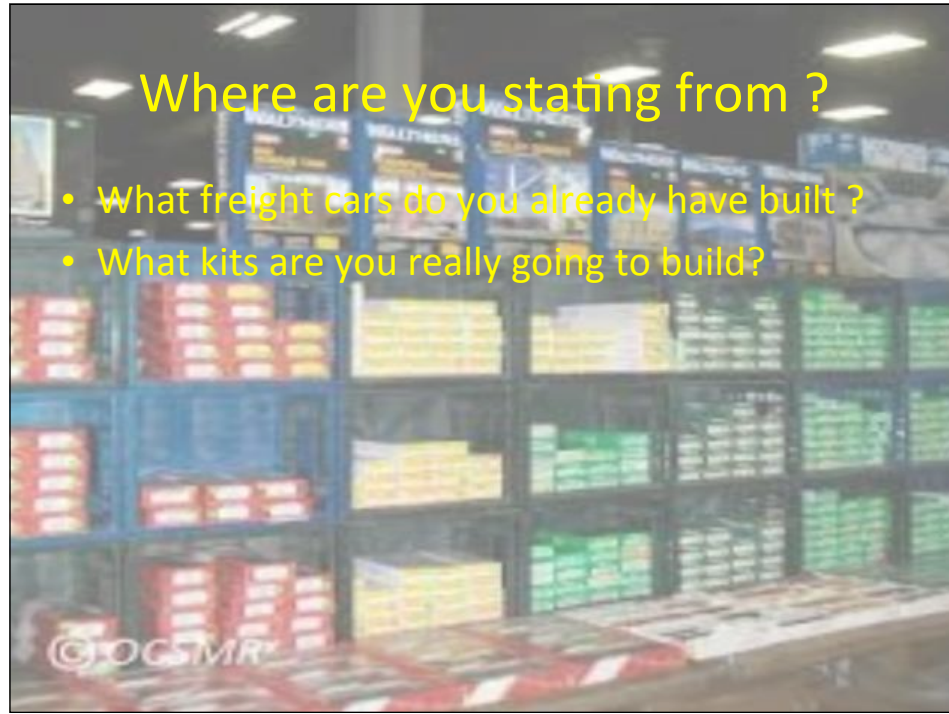
Where are you stating from ?

- **What freight cars do you already have built ?**



Where are you starting from ?

- What freight cars do you already have built ?
- What kits are you really going to build?

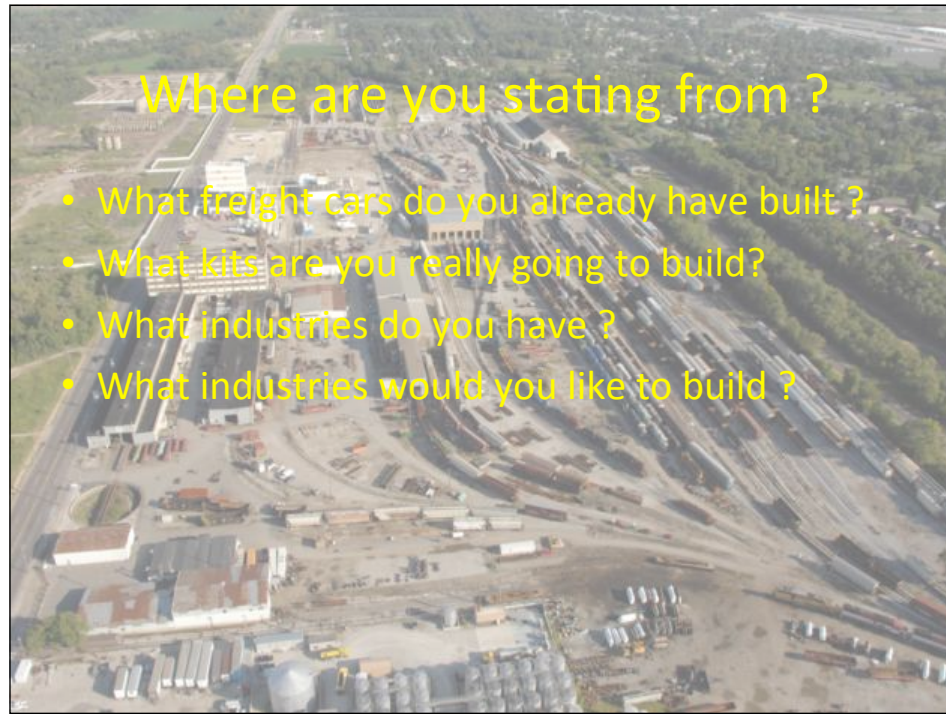


Where are you starting from ?

- What freight cars do you already have built ?
- What kits are you really going to build?
- What industries do you have ?



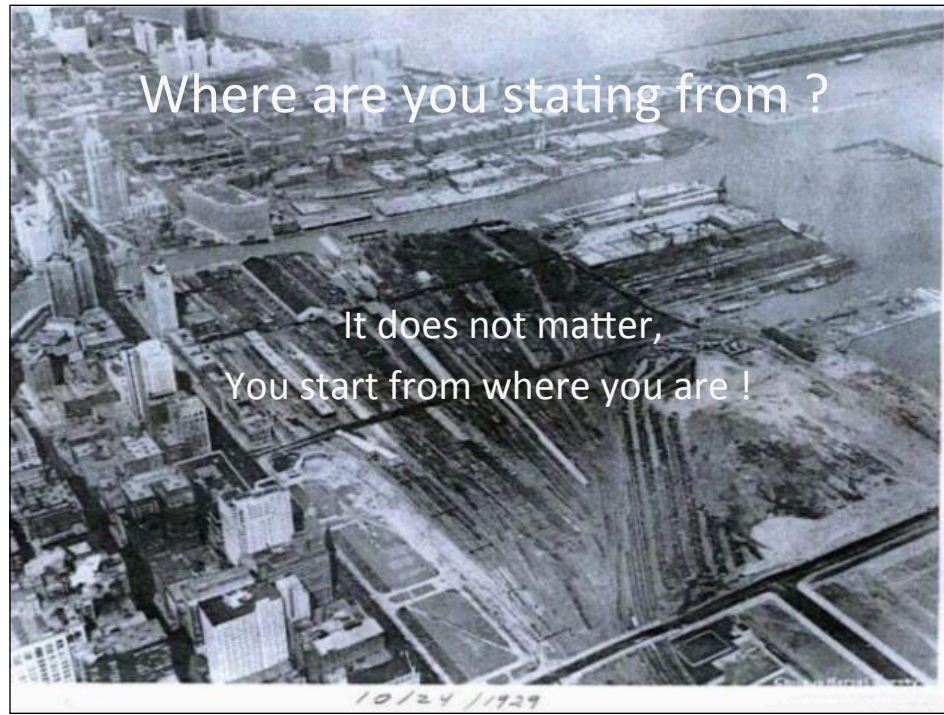
Note the refinery industry in the background.....



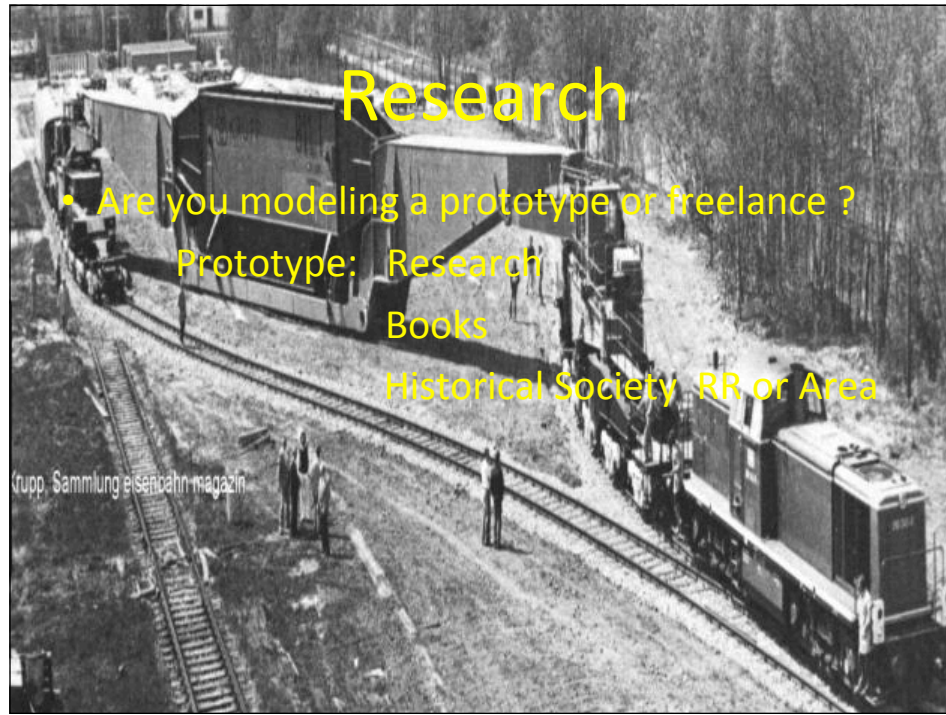
Where are you stating from ?

- What freight cars do you already have built ?
- What kits are you really going to build?
- What industries do you have ?
- What industries would you like to build ?

How about this industry ??? This is when your wife says OK to a 10,000 sq ft basement If you like a certain type of cars you will need to tailor your industries to use those cars. Will county has a grocery distribution warehouse, but to make it interesting all refrigtated cars have to go to the back two doors where the frozen foods ate kept.



Look at your car inventory Look at your industries Look at what you are actually going to build Grant Park the early days



I have seen operators do this on the model railroads, but why would they do it in real life ?

Prototype

- **Early Railroads tended to be Natural Resource orientated**

Crops, Lumber, Minerals

Later Railroads served all industries

Agricultural, Manufacturing, Distribution

What was the level of Industrial growth in the area you model in your time frame ?