

The Pennsylvania Railroad's X31 boxcar fleet



1W/WT-ST/WLS

E.W. 9-11

E.H. 12-11

L.L. 40-0

L.W. 9-2

I.H. 10-0

CUFT. 3713

BLX-34 X31

P.R.R.

AUTO RACKS

PENNSYLVANIA

60595

CAPY 100000

LDLMT 116300

LTWT 53700 NEW 4 34

Bruce F. Smith

Hindsight 2020

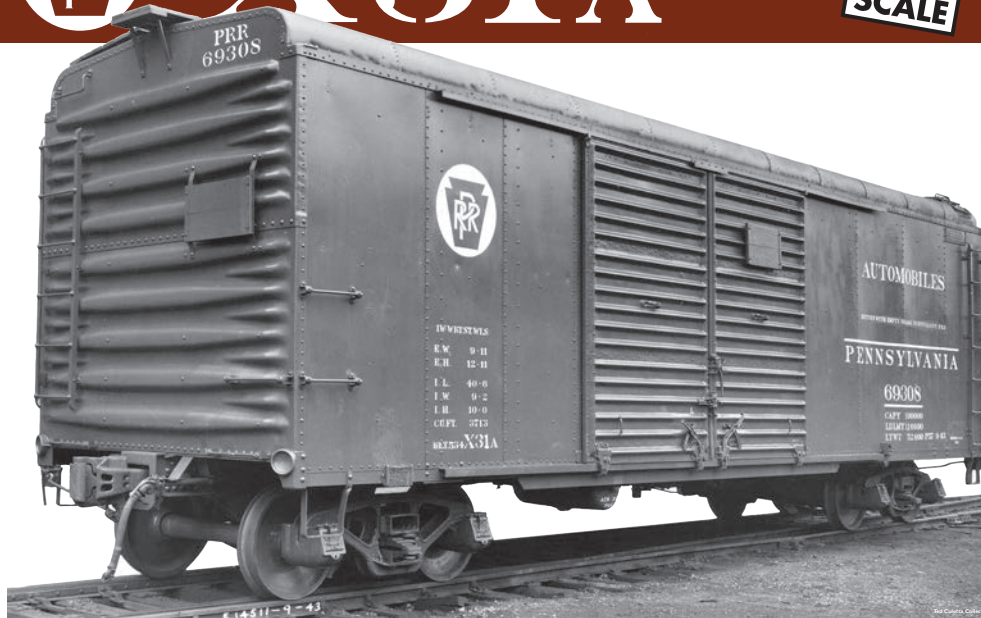
Acknowledgements

- Richard Hendrickson
 - Larry Kline
 - Bill Lane
 - PRR company photographers
 - Ernest Stefan
 - Joe Collias collection
 - Bob Charles
 - Howard Ameling
 - John C. LaRue
 - George Sisk
 - Col. Chet McCoid
- and many many others



X31A

**HO
SCALE**



In 1934 the Pennsylvania Railroad started production of a new series of 40' boxcars – the X31 series. These cars featured an unusual round roof appearance to provide maximum capacity within the then standard loading gauge.

The most numerous group of these new boxcars was the X31A, produced in both single and double door variants. In total, the PRR produced 7200 X31A boxcars, with another 2000 cars being produced to similar classes X31B and X31C. This made the X31 series the second most numerous series of PRR boxcar after 1949. There were more X31 boxcars than many railroads had entire freight cars of all types!

These cars traveled throughout North America and could be seen literally anywhere until the mid 1960s when age and attrition took their toll. Even so, more than 1000 were still in service at the time of the Penn Central merger, though most were retired quickly afterwards.

Rapido is pleased to announce an all-new HO model of the X31A boxcars in both single- and double-door variations. These cars feature state-of-the-art tooling with separate grabs, crisp and accurate details and correct PRR class 2D-F12 trucks with free-rolling turned metal wheelsets. Both Equipco and Ajax brake wheels will be offered, with the correct style being applied to each car. These cars will be offered in multiple numbers and sold to dealers as three or six car packs which can be broken up for individual sale.

Reserve your models of this important freight car today!

\$49.95 (SINGLE)
\$299.70 (6-PACK)
US MSRP

\$59.95 (SINGLE)
\$359.70 (6-PACK)
CANADIAN MSRP

All-new Models!
Two Body Styles!
Completely Assembled!
Accurately Decorated!
Multiple Car Numbers!

Rapido's X31A Boxcars Feature:

- Both Single- and Double-door versions available
- Complete underbody detailing with all piping
- Super-detailed Barber PRR 2D-F12 trucks
- Insulated blackened turned metal wheelsets
- Separate grabs and ladders
- Accurate paint schemes
- Multiple car numbers per scheme
- Factory-installed Macdonald-Cartier couplers
- Available in singles or multi-packs.*
- Multi-packs boxed for individual sale

* Dealers must order multi-packs.



CANADA: UNIT 21 • 500 ALDEN ROAD • MARKHAM • ONTARIO • L3R 5H5
USA: PO BOX 796 • HIGGANUM • CONNECTICUT • 06441
Tel. 1-855-LRC-6917 Fax. 1-905-474-3325 Website www.rapidotrains.com

Store Name _____
Phone Number _____

RAPIDO

X31

- 250 cars ordered Oct 1932 (likely with KD brakes) (59862-60111)
- 500 cars ordered Jan 1934 (60222-60721)
- 500 cars originally to be X31A added to 1934 order (69500-69999)
- Late 1930s- early 1940s
 - -109 cars converted to class X31A
 - -690 cars converted to class X31F

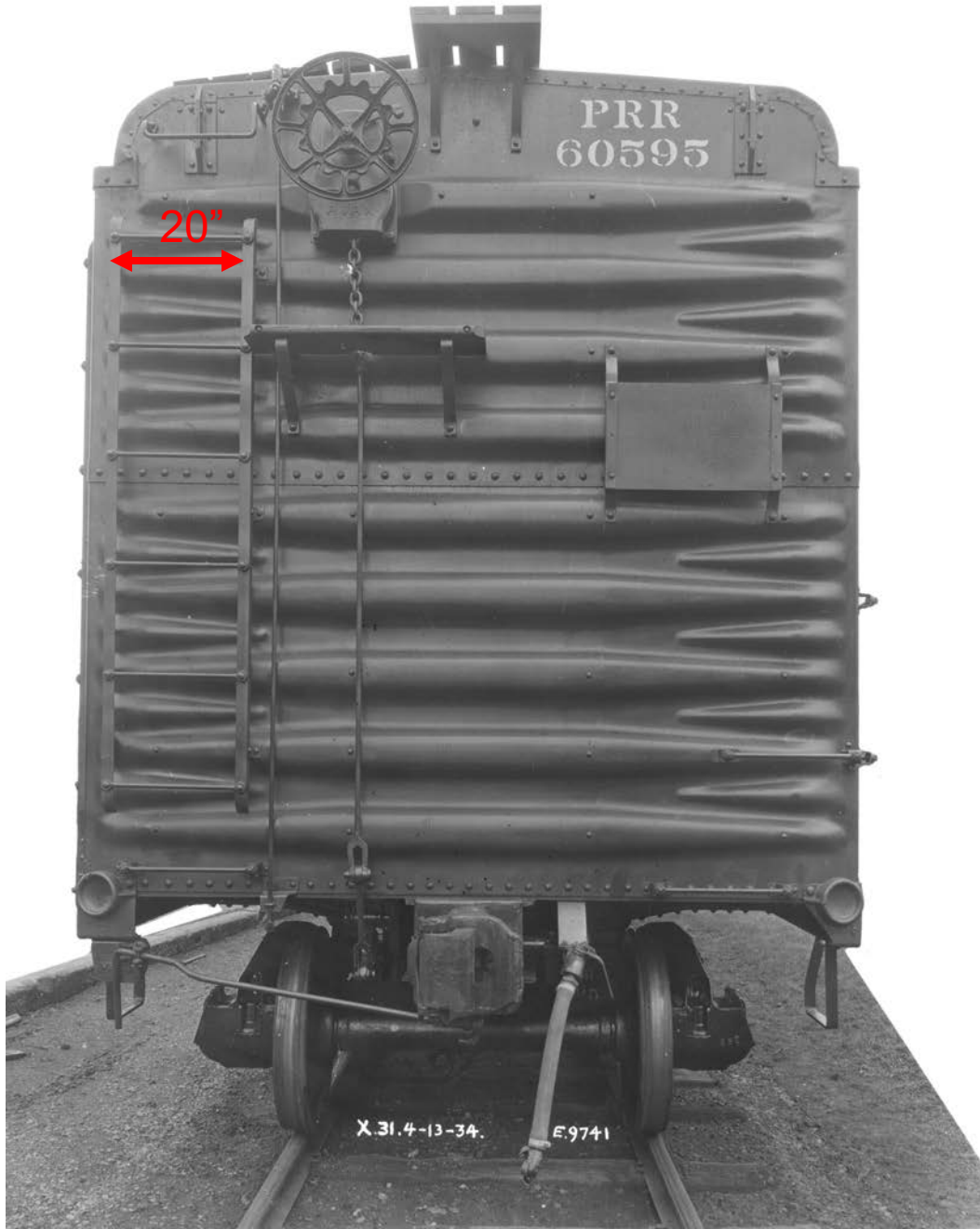
X31



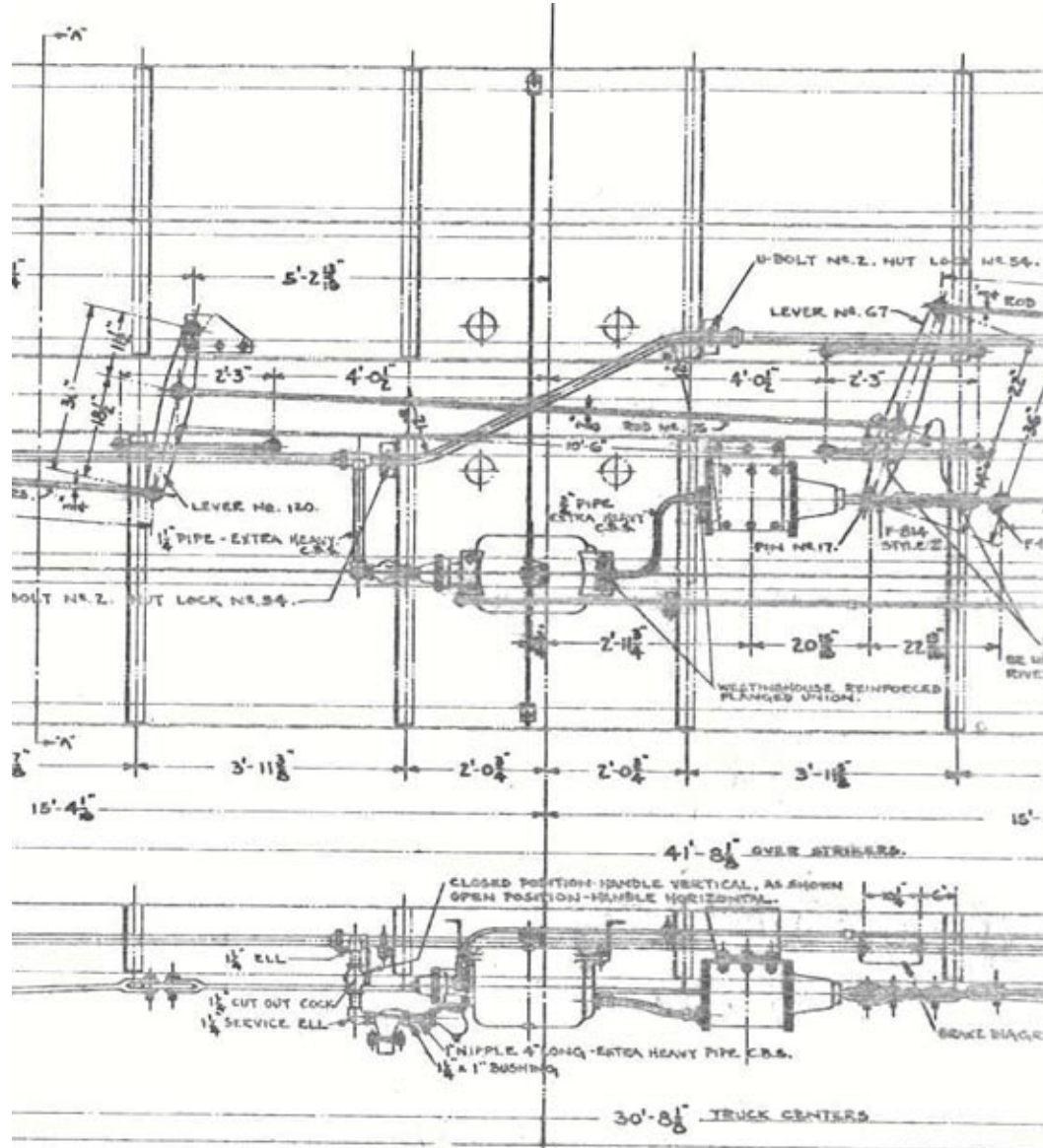
X31 class



X31



X31/X31F u/f KD



X31A

- 2500 cars ordered Feb 1934 (delivered by August 1934) (67400-69499, 70000-70399)
 - 500 cars equipped with double doors (69000-69499)
 - Remaining 2000 cars were built with single doors
- 4700 (single door) cars announced Dec 1935 (76400-81099)
 - First cars not built exclusively by PRR
 - 700 built by PRR
 - 1000 built by Pressed Steel Car Co.
 - 800 built by AC&F
 - 700 built by Pullman Standard
 - 600 built by Bethlehem Steel Co.
 - 400 built by General American
 - 250 built by Greenville
 - 250 built by Ralston
- 100 cars converted from X31 (double doors) (81100-81199)
- 9 cars converted from X31 (double doors) (120003-120011)

X31A



F 19319

X31A

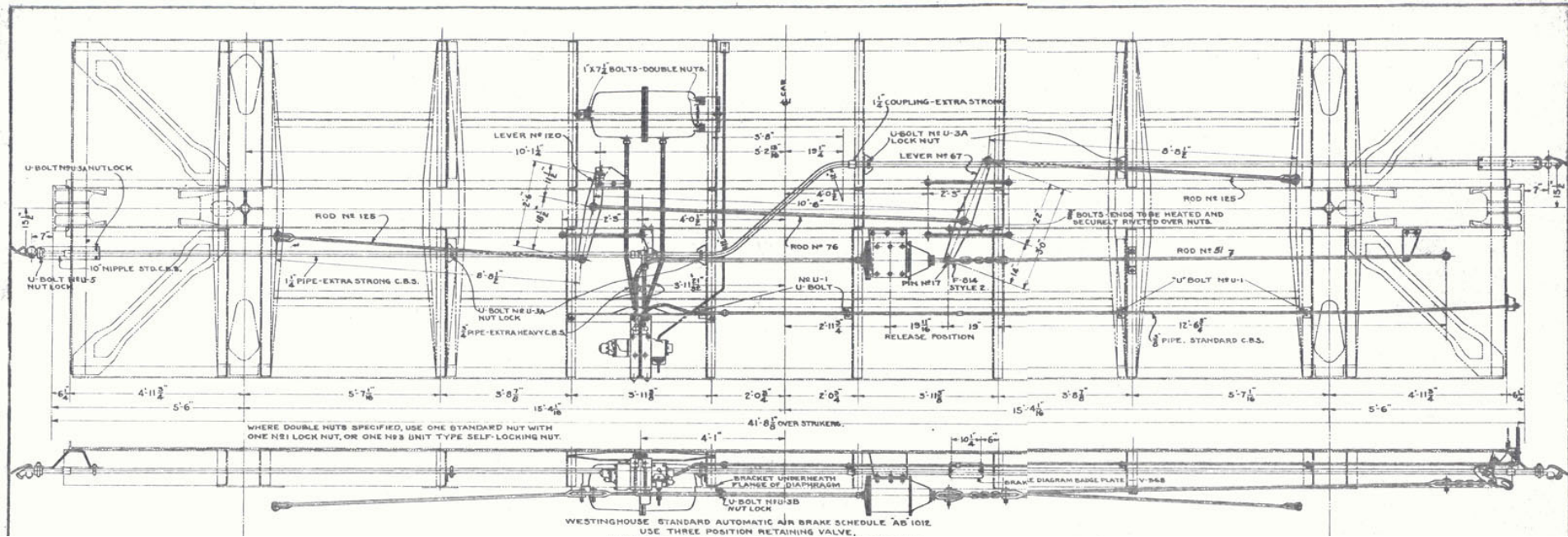


4-13-34 E.9736

X31A



X31A-late underbody as built



- November 1, 1935 - change from transverse to longitudinal reservoir
- X31A numbers below 76777 should have a transverse reservoir.
- X31A numbers over 77061 should have a longitudinal reservoir.

X31A



X31A



Reweighed 5-55, patch panels on two sheathing sections at A end, all-coil trucks, Joe Collias collection

X31A



X31A



X31A



X31A



repainted 1-56, full length patch panel to rt. of door, George Sisk photo, Charles Winters collection

X31A



PRR Stores Dept

X31B

- 1190 cars announced Dec 1935 (61100-62799)
 - Introduces a new “flush” roof eave.
 - No automobile loaders
- Circa 1959, many were converted to K11 stock cars

X31B



E.W. 0-11
E.H. 13-0
I.L. 40-6
I.W. 0-2
I.H. 10-0
CU.FT. 3743

BLT 336 X31B P.R.R.

AUTOMOBILES

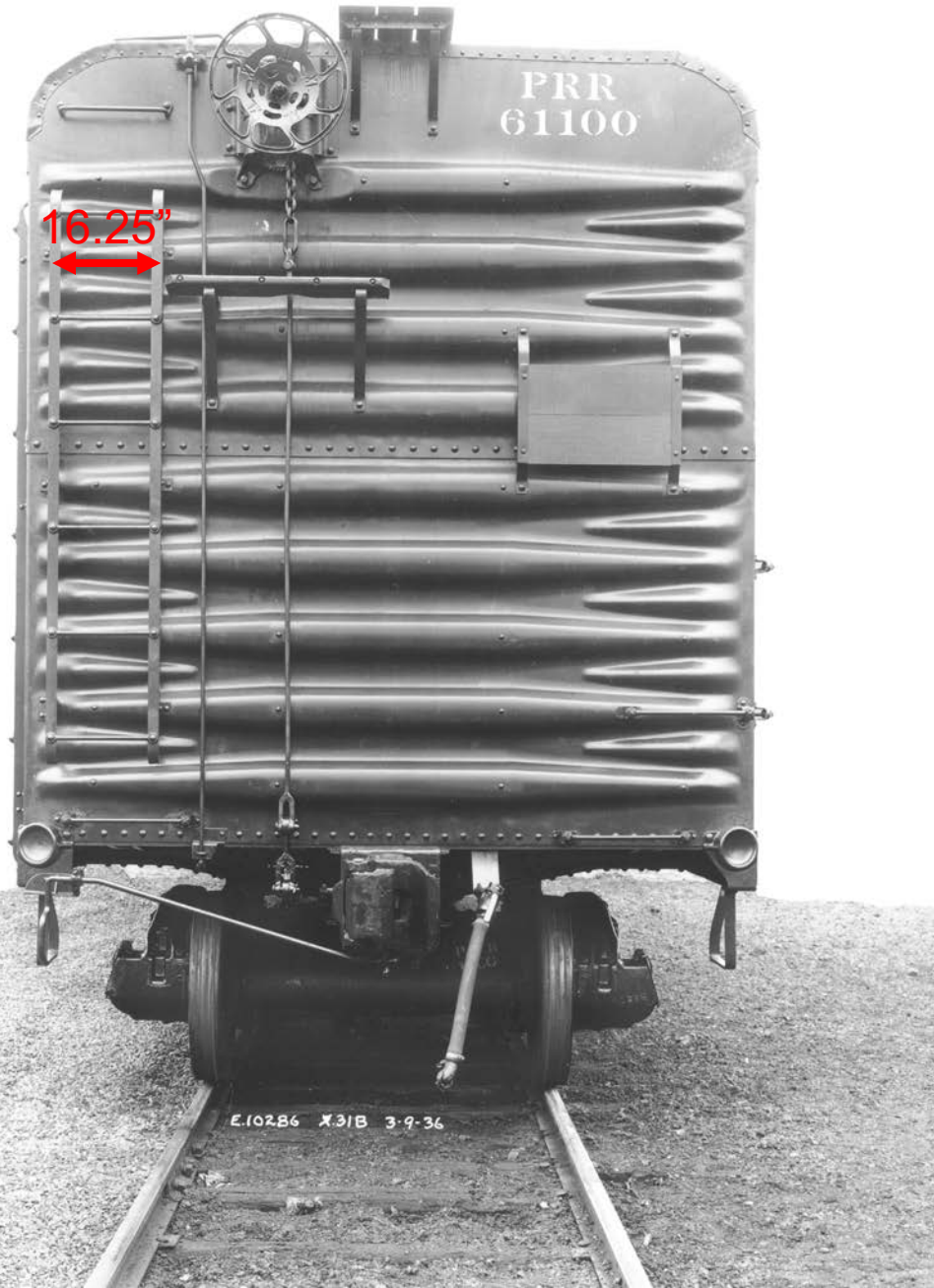
PENNSYLVANIA

61100

CAPY 100000
LDLMT 117900
LTWT 51100 NEW 3-36

E. 10254 X31B 3-9-36

X31B



X31B



IN W REST WLS
K.W. 9-11
K.H. 13-0
I.L. 40-0
I.W. 0-2
I.H. 10-0
CUFT. 3715
X31B

AUTOMOBILES

PENNSYLVANIA

61321 RETURN WHEN EMPTY
TO P.R.R. MIDVALE
PHILADELPHIA

CAPY 100000
LDLMT 116600
LTWT 52400 P57 3-46

OVER ENGINE CAB

DOOR FASTENERS

E. 15553 - 3-11-46

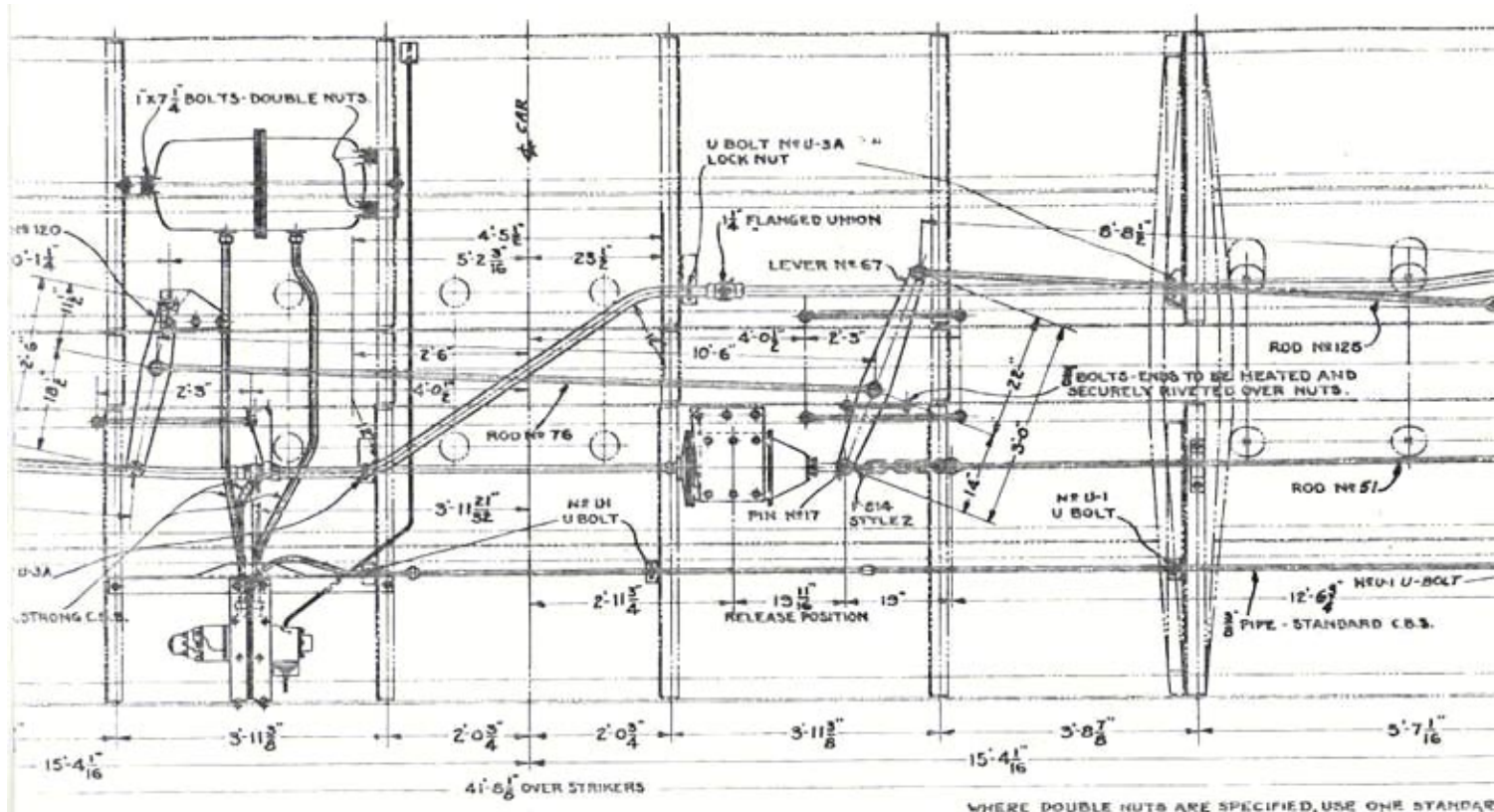
X31C

- 810 cars announced Dec 1935 (60800-61099, 62800-63309)
 - Autoloader equipped
- Circa 1959, many were converted to K11 stock cars

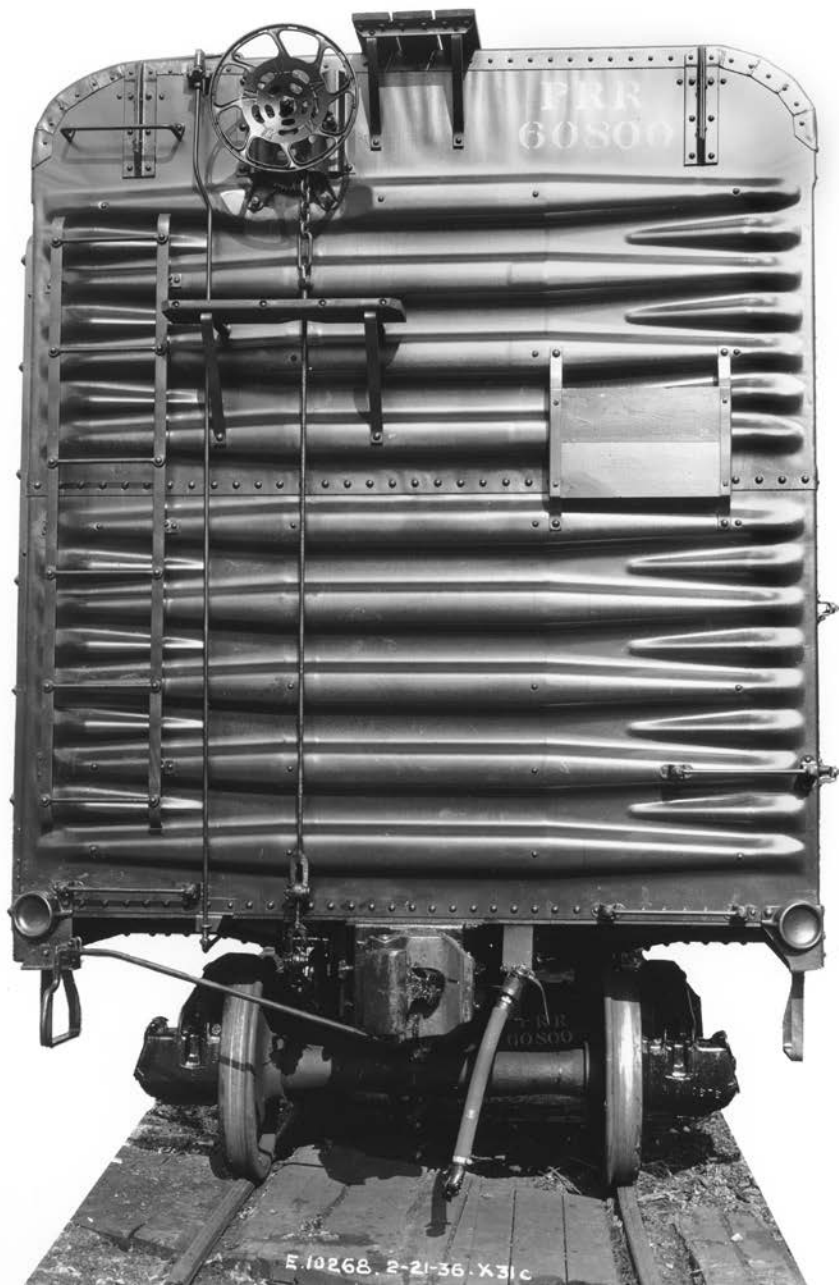
X31C



X31C



X31C



X31C



new paint 12/39, stenciled "RETURN WHEN EMPTY TO LINDEN N J", Ernest Stefan photo, NMRA library collection

X31C



reweighed off-line at LA in 8-55, Col. Chet McCoid photo, Bob's Photo collection

X31 rebuilds

- X31D
 - 6 cars converted from X31A briefly, circa 1937 (57703, 57704)
 - 3 large roof hatches installed
 - Assigned to Armstrong Cork Co., Lancaster, Pa. for top loading of linoleum, etc...
 - Appear to have been converted back within about a year

X31D



X31 rebuilds

- X31F
 - 690 cars converted from X31 circa 1940 (81200-81889)
 - “Turtle roof” – roof height increased except end panels
 - NOT Designed to haul “Jeeps” – predate the Jeep
 - Autoloader equipped
 - Some may have been converted from KD equipped cars

X31F



X31F



1950s, Jim Gerstley collection

X31 rebuilds

- X31G
 - 1(?) car converted from X31A, #77742, circa 1958
 - Roof hatches installed
 - Coal tar loading

Class	Number	Series	AAR Class	Built	PRR Oct 44	PRR Oct 48	PRR Apr 52	PRR Oct 53	PRR Oct 58	PRR Oct 63	PRR Apr 68
X31	59862	60111	XA XM XMR	250	35	35	35	35	35	34	-
X31	60222	60721	XA XAR XM XMR	500	212	212	210	210	208	208	2
X31	69504	69997	XA XAR XM XMR	500	203	202	202	202	199	197	4
X31A	67400	68999	XA XAP XM XMP XP LC	1600	1595	1588	1580	1578	1559	1524	176
X31A	69999	70399	XM XMP XP	400	399	395	393	393	389	378	43
X31A	76400	81099	XM XMP XP	4700	4678	4661	4645	4635	4593	4496	775
X31A DBL DR	69000	69499	XA XAP XM XMP XMR	500	500	498	496	496	491	483	9
X31A DBL DR	81100	81199	XA XM XMP	100	100	100	100	99	98	95	1
X31A DBL DR	120003	120011	XA XM	9	9	9	9	9	9	9	1
X31B	61100	62799	XAP XM XML XMP XMR	1190	1186	1184	1182	1181	1173	1132	11
X31C	60800	61099	XA XM XAR XMR	300	300	300	299	297	294	280	-
X31C	62800	63309	XM XMR XR	509	509	506	503	503	501	480	11
X31F	81200	81889	XM XAR XMR XR	690	690	690	688	688	686	680	12
X31G	77742	-	LC	1	-	-	-	-	1	1	1

Data compiled by Rich Orr

The End

